

Fiberlock PM is a pre-mixed "lockdown" sealing treatment for microscopic residual fibers present after the removal of Asbestos Containing Material (ACM). Fiberlock PM is a ready-to-use, Class "I" fire-rated coating that provides a flexible barrier over residual fibers to ensure final air clearance. Fiberlock PM is UL[®] classified for use as a primer for fireproofing replacement materials under the "Encapsulant Materials" section of the UL directory, and is compatible with most leading brands of flooring adhesives. Fiberlock PM is a water-based, nontoxic coating that employs advanced 100% acrylic resin technology to extend the life expectancy of airless spray equipment.

SURFACE PREPARATION: Warning! If you scrape, sand, or remove old paint from any surface, you may release lead dust. LEAD IS TOXIC. EXPOSURE TO LEAD DUST CAN CAUSE SERIOUS ILLNESS, SUCH AS BRAIN DAMAGE, ESPECIALLY IN CHILDREN. PREGNANT WOMEN SHOULD ALSO AVOID EXPOSURE. Wear a NIOSH approved respirator to control lead exposure. Carefully clean up with a wet mop or HEPA vacuum. Before you start, find out how to protect yourself and you family by contacting the U.S. EPA/Lead Information Hotline at 1-800-424-LEAD(5323) or log on to www.epa.gov/lead.

APPLICATION TOOLS: Apply Fiberlock PM with airless spray equipment. Use the settings below when applying Fiberlock PM:
Spray Settings: Pressure: 1700-3000 psi Tip: .015-.021

PRODUCT APPLICATION: Stir Fiberlock PM thoroughly to achieve a uniform consistency. Fiberlock PM is pre-mixed; water-addition is not necessary.

LOCKDOWN: Sealing microscopic residual fibers after asbestos removal is mandatory on every project. Prior to post-removal air monitoring, apply one coat to all exposed surfaces. Fiberlock PM has been accepted as part of a UL Classified Fireproofing System for use with Retro-Guard[®] manufactured by W.R. Grace & Co., Conn. Coverage should not be less than 500 ft² per gallon.

PULLDOWN BY MISTING: Misting the contaminated air is an effective technique prior to post-removal air monitoring. To pulldown free-floating asbestos fibers effectively, stand in the center of the room and hold the spray gun as close to the ceiling as possible. A mist should be sprayed parallel to the ceiling in every direction or in a circle. Apply one coat to the polyethylene sheeting on the walls and floor prior to dismantling containment.

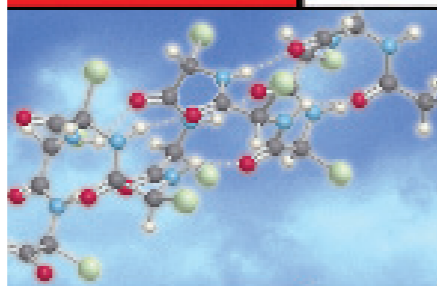
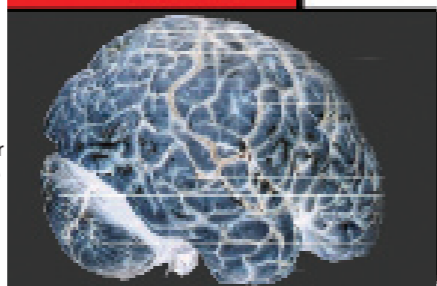
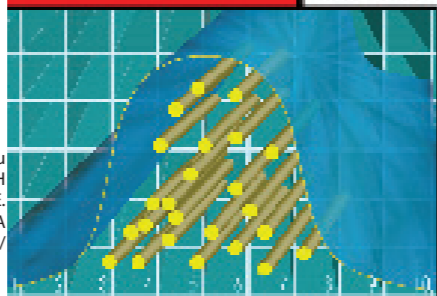
CLEANUP: Tools and drippings should be cleaned with warm soapy water before coating dries. Follow equipment manufacturer's directions to clean spray equipment. Dispose of all waste according to current Local, State and Federal regulations.

DRYING TIME @ 70°F 50% R.H: To Touch: 1-2 hour

COVERAGE:
LOCKDOWN: Not less than 500 ft² per gallon.

PRECAUTIONS: Store in a dry place at temperatures between 40°F and 100°F. Approved respirators must be used to prevent inhalation of asbestos fibers that may be present in the air. Protective clothing should be worn.

Careful consideration should be given to all EPA, OSHA, and State regulations in effect at the time of application of Fiberlock PM. The EPA, through the Office of Pesticides and Toxic Substances, has issued a report headed "Guidance for Controlling Friable Asbestos Containing Materials in Buildings", EPA 560/5 85-024 June 1985, containing the proper data, cautions and procedures for asbestos control. Copies are available from: TSCA Industry Asst. Office, EPA TS-799, 401 M Street SW, Washington, DC 20460, (202) 554-1404.



QUALITY

KNOWLEDGE

SCIENCE



FIBERLOCK
TECHNOLOGIES

FIBERSET
P MTM

Asbestos Abatement Products

POST-REMOVAL
SURFACE SEALANT



ENCAPSULANT MATERIALS
AS TO FIRE RESISTANCE
FOR USE WITH CLASSIFIED FIRE RESISTANCE
TYPES RG, AND 106 CEMENTITIOUS MIXTURES CLASSIFIED FOR
W. R. GRACE & CO.— CONSTRUCTION PRODUCTS DIVISION AND AT
AN APPLICATION RATE OF 500 SQ. FT./GAL. ABILITY OF THIS MATERIAL TO
ACT AS A SEALANT HAS NOT BEEN INVESTIGATED. SEE UL FIRE RESISTANCE
DIRECTORY 95S1

Fiberlock PM Clear 7475 or Fiberlock PM White 7470 are post removal encapsulant materials for use with Classified Types RG, and 106 cementitious mixtures manufactured by W. R. Grace & Co.— Construction Products Division, applied at an application rate of not less than 500 sq ft/ gal to beams, columns, joists, roof-ceiling assemblies consisting of all fluted galvanized steel roof deck and floor-ceiling assemblies consisting of all fluted or cellular steel floor and form units or cellular/fluted blends provided that the underside of the units receives a coat of Type SK-3 prior to the application of the cementitious mixture. The ability of these materials to act as a sealant has not been investigated.

CAS NO. 7732-18-5 57-55-6 Not avail.* Not avail.*	Chemical Ingredients Water Propylene glycol Proprietary defoamer Acrylic resin solids *Contents partially unknown
---	--

CAUTION!
KEEP OUT OF REACH OF CHILDREN.
Do not take internally. Close container after each use. Keep from freezing.
24 hour Emergency "CHEM-TEL" Phone: 1-800-255-3924

DISCLAIMER: These suggestions and data are based on information we believe to be reliable. They are offered in good faith, but without guarantee, as conditions and methods of use of this product are beyond our control. Neither Fiberlock Technologies, Inc., nor its agents shall be responsible for the use of this product or any procedures or apparatus mentioned. We recommend that the prospective user determine the suitability of Fiberlock Fiberlock PM for each specific project and for the health and safety of personnel working in the area.

For additional information and/or precautions check Material Safety Data Sheet (MSDS) or Product Data Sheet (PDS) available online at www.fiberlock.com.

Proposition 65 Warning:
This product contains chemicals known by the state of California to cause cancer.

*Maximum regulatory allowable VOC content for this category of product.

Made in the USA
Manufactured By:
Fiberlock Technologies, Inc.
Andover, MA 01810
(800) 342-3755
www.fiberlock.com

7475

FOR PROFESSIONAL USE ONLY
5 U.S. Gallons(18.925 Liters) Net
Max Allowable VOC Content*: 200
Actual Calculated VOC Content: 18

7475 - Clear
www.fiberlock.com