

Lead Shield is a water based 100% acrylic lockdown with a dual purpose; it binds residual lead-based paint and dust present after removal; and accepts most topical coatings. Lead Shield sprays on white and dries clear to permit visual inspection of any residual paint. Lead Shield is a one step product which bonds to most surfaces, eliminating the need for sanding, priming and sizing recently stripped walls. Lead Shield can be used on both interior and exterior surfaces, and was expressly formulated to prepare these surfaces to accept a final topical coat. Lead Shield should not be used as a substitute for encapsulation.

SURFACE PREPARATION: WARNING! If you scrape, sand or remove old paint from any surface, you may release lead dust. LEAD IS TOXIC. EXPOSURE TO LEAD DUST CAN CAUSE SERIOUS ILLNESS, SUCH AS BRAIN DAMAGE, ESPECIALLY IN CHILDREN. PREGNANT WOMEN SHOULD ALSO AVOID EXPOSURE. Wear a NIOSH-approved respirator to control lead exposure. Carefully clean up with a wet mop or HEPA vacuum. Before you start, find out how to protect yourself and your family by contacting the U.S. EPA/Lead Information Hotline at 1-800-424-LEAD (5323) or log on to www.epa.gov/lead.

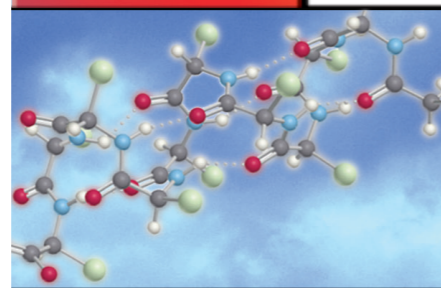
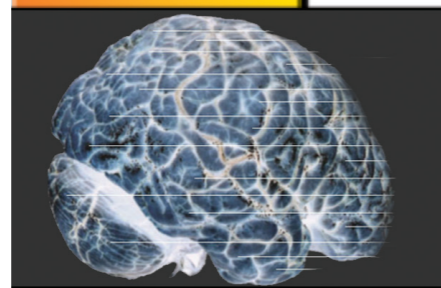
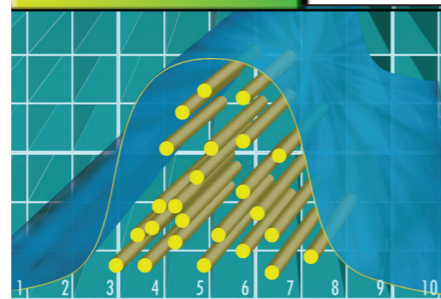
Surfaces must be free of all surface contamination prior to application of Lead Shield. Patch any irregularities with vinyl patching paste or appropriate patching compound. If chemical strippers were used to remove the paint, follow the manufacturers' suggestions for surface cleaning before applying Lead Shield.

APPLICATION TOOLS: Apply Lead Shield with brush, roller, conventional or airless spray equipment.

TOOLS: **Brush:** Synthetic, nylon or polyester brush
Roller: Synthetic fiber 3/8" nap
Spray: .071 - .019 tip

PRODUCT APPLICATION: Lead Shield is supplied ready to use. Apply Lead Shield uniformly by brush, roller, or spray.

PRECAUTIONS: Stir thoroughly. Do not mix with any other coatings, solvents or colors in oil. Do not apply when air or surface temperature is below 50°F or when drying conditions are poor. Do not re-coat with coatings using aromatic or other strong solvents. Use adequate ventilation during application.



QUALITY

KNOWLEDGE

SCIENCE

FIBERLOCK
TECHNOLOGIES

LEAD
SHIELD

Lead Abatement Products

POST REMOVAL
LOCKDOWN/
SEALANT

CLEANUP: Clean tools and drippings with warm soapy water before coating dries. Dispose of all waste according to current local, state and federal regulations.

DRYING TIME @ 70°F 50% R.H. To Touch – 30 Minutes
Recoat – 2 Hours

COVERAGE – AVERAGE

Smooth Surfaces- 450 ft² per gallon

Porous Surfaces- 100-300 ft² per gallon

Spray- 50% of above

CAS NO.:	Chemical Ingredients:
7732-18-5	Water
57-55-6	Propylene glycol
9004-65-3	Methyl cellulose
Not Avail*	Latex resin solids
*Contents Partially Unknown	

KEEP OUT OF REACH OF CHILDREN

Do not take internally. Close container after each use. Keep from freezing.
24 hour Emergency "CHEM-TEL" Phone: 1-800-255-3924

DISCLAIMER: These suggestions and data are based on information we believe to be reliable. They are offered in good faith, but without guarantee, as conditions and methods of use of this product are beyond our control. Neither Fiberlock Technologies, Inc., nor its agents shall be responsible for the use of this product or any procedures or apparatus mentioned. We recommend that the prospective user determine the suitability of Lead Shield for each specific project and for the health and safety of personnel working in the area.

For additional information and/or precautions check Material Safety Data Sheet (MSDS) or Product Data Sheet (PDS) available online at www.fiberlock.com

*Maximum regulatory allowable VOC content for this category of product.

MADE IN THE USA

5470

FOR PROFESSIONAL USE ONLY
5 U.S. GALLONS(18.925 LITERS) NET
MAX ALLOWABLE VOC CONTENT*: 200 G/L
ACTUAL CALCULATED VOC CONTENT: 109 G/L

CLEAR - 5470

www.fiberlock.com

Manufactured by:
Fiberlock Technologies, Inc.
Andover, MA 01810
(800) 342-3755
www.fiberlock.com