

A-B-C Asbestos Binding Compound is a high solids asbestos encapsulant/sealant, designed to encapsulate friable Asbestos Containing Material (ACM) such as fireproofing and insulation material. **A-B-C** is an important tool for coping with the health hazards associated with exposure to asbestos fibers. In 1978, **A-B-C** was tested for the EPA under contract #68-03-2552-T2005 by Battelle Laboratories of Columbus, Ohio, and found to meet the requirements for the effective encapsulation and removal of ACM. The high solids, nonflammable composition of **A-B-C** allows for dilution with water to provide maximum flexibility for specific asbestos abatement needs, including lockdown/removal, penetrating encapsulation and bridging encapsulation. **A-B-C** is also an effective tool for controlling the documented health hazard of exposure to asbestos fibers found present in soil.

SURFACE PREPARATION: Warning! If you scrape, sand, or remove old paint from any surface, you may release lead dust. LEAD IS TOXIC. EXPOSURE TO LEAD DUST CAN CAUSE SERIOUS ILLNESS, SUCH AS BRAIN DAMAGE, ESPECIALLY IN CHILDREN. PREGNANT WOMEN SHOULD ALSO AVOID EXPOSURE. Wear a NIOSH approved respirator to control lead exposure. Carefully clean up with a wet mop or HEPA vacuum. Before you start, find out how to protect yourself and you family by contacting the U.S. EPA/Lead Information Hotline at 1-800-424-LEAD(5323) or log on to www.epa.gov/lead.

Prior to application it is important to determine if the existing asbestos matrix is well adhered to the substrate. Correct any surface defects and clean all surfaces thoroughly. Be careful not to agitate asbestos fibers during preparation; this could increase asbestos exposure. Stir **A-B-C** thoroughly to achieve a uniform consistency. **A-B-C** may be diluted with water for different applications.

APPLICATION TOOLS: Professional models of all brands of airless spray equipment can be used to successfully apply **A-B-C**. Use the settings below when applying **A-B-C**:

Penetrating:	Bridging:	Removal/Lockdown:
Pressure: 1300 - 1400 psi	Pressure: 2200 - 2300 psi	Pressure: 2200 - 2300 psi
Tip: .017 - .031	Tip: .017 - .019	Tip: .015 - .025

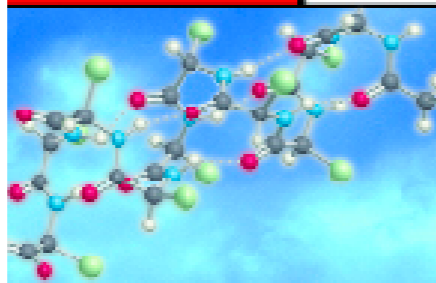
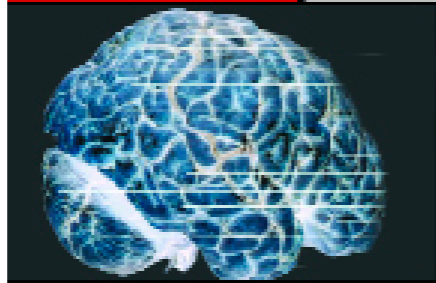
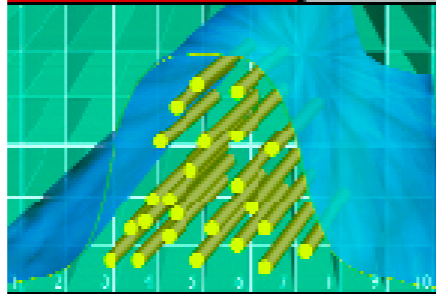
PRODUCT APPLICATION:

ENCAPSULATION INSTRUCTIONS

PENETRANT- For most fibrous asbestos applications such as "cotton candy" style fireproofing or compressed acoustic material less than 2 inches thick, add 1 part water to 1 part ABC. Using the proper spray equipment settings listed, apply ABC to the ACM until saturated. Multiple passes may be required, allowing time between passes for dissipation of the solution into the matrix. Full saturation is achieved when the ACM will not absorb any more of the encapsulant into the matrix. Coverage, depending on thickness and porosity of the material, can vary between 50 - 75 sq. ft./gal.

BRIDGING AGENT- A qualified asbestos professional should determine the necessary dry film thickness for individual abatement projects. The necessary dry film thickness of a bridging encapsulant for asbestos containing materials (ACM) will vary from project to project as ACM can have a wide range of characteristics, including density, porosity, and surface profile. In the EPA's Guidance for Controlling Asbestos-Containing Materials in Buildings (EPA 560 / 5-84024, June 1985), the primary instruction regarding dry film thickness states that when encapsulating ACM, the coating is to be applied "considerably thicker than recommended for painting. Coverage should be no more than 100 sq. ft. per gallon and should create a continuous, unbroken coating" (Section 5.1.3, page 5-8).

For bridging applications, apply ABC at full strength with an airless sprayer in accordance with the settings listed below. Typical bridging applications are applied at a coverage rate of 75-100 sq. ft./gallon, which yields a dry film thickness between 6-10 mils on hard, cementitious ACM. For more information, contact Fiberlock or visit our website for the complete Specification for ABC.



QUALITY

KNOWLEDGE

SCIENCE

FOR PROFESSIONAL USE ONLY
5 U.S. Gallons(18.925 Liters) Net
Max Allowable VOC Content*: 200
Actual Calculated VOC Content: 57

FIBERLOCK
TECHNOLOGIES

ABC®

Asbestos Abatement Products

**ASBESTOS BINDING
COMPOUND**

Professional Asbestos Encapsulant/Sealant

6423 - GREEN
www.fiberlock.com

REMOVAL/LOCKDOWN

Removal is recommended for loosely adhered ACM. Mix 4 parts water to 1 part ABC and apply to ACM. ABC will facilitate removal by penetrating into the ACM keeping it moist and sticky. After the ACM has been removed, apply 1 part ABC diluted with 1 part water to seal residual fibers left on substrate.

SOIL ENCAPSULATION INSTRUCTIONS

PENETRANT- For encapsulation of soil contaminated with asbestos, add 2 parts water to 1 part ABC. Saturate the soil by applying liberally over the intended areas. Multiple coats can be applied in one application. Coverage is dependent upon the moisture content of the soil. If the soil is damp, expect higher coverage rates.

BRIDGING AGENT- Apply ABC at full strength with an airless sprayer in accordance with the settings listed. If the encapsulated surface is expected to receive repeated foot traffic, apply multiple coats for additional protection.

PRECAUTIONS: Close container after each use. Store in a dry place at temperatures between 40°F and 100°F. Approved respirators must be used to prevent inhalation of asbestos fibers that may be present in the air. Protective clothing should be worn.

Careful consideration should be given to all EPA, OSHA, and State regulations in effect at the time of application of **A-B-C**. The EPA, through the Office of Pesticides and Toxic Substances, has issued a report headed "Guidance for Controlling Friable Asbestos Containing Materials in Buildings", EPA 560/5 85-024 June 1985, containing the proper data, cautions, and procedures for asbestos control. Copies are available from: TSCA Industry Asst. Office, EPA TS-799, 401 M Street SW, Washington, DC 20460, (202) 554-1404.

CLEANUP: Tools and drippings should be cleaned with warm soapy water before coating dries. Follow equipment manufacturer's directions to clean spray equipment. Dispose of all waste according to current Local, State and Federal regulations.

DRYING TIME @ 70°F 50% R.H.: To Touch-1 hour
Drying time will vary based on thickness and porosity of the ACM being encapsulated.

COVERAGE: Coverage depends on thickness and porosity of the material.

ENCAPSULATION - PENETRANT: 50-75 ft² per gallon

ENCAPSULATION - BRIDGING AGENT: 75-100 ft² per gallon

ENCAPSULATION - PENETRANT (Soil): 30-35 ft² per gallon

ENCAPSULATION - BRIDGING AGENT (Soil): 75-100 ft² per gallon

CAS NO.	Chemical Ingredients
7732-18-5	Water
1328-53-6	Phthalocyanine green
25265-77-4	2, 2, 4-trimethyl-1-3, pentanediol monoisobutyrate
Not avail.*	Proprietary surfactant
Not avail.*	Latex resin solids

*Contents partially unknown

CAUTION!
KEEP OUT OF REACH OF CHILDREN.

Do not take internally. Close container after each use. Keep from freezing.
24 hour Emergency "CHEM-TEL" Phone: 1-800-255-3924

DISCLAIMER: These suggestions and data are based on information we believe to be reliable. They are offered in good faith, but without guarantee, as conditions and methods of use of this product are beyond our control. Neither Fiberlock Technologies, Inc., nor its agents shall be responsible for the use of this product or any procedures or apparatus mentioned. We recommend that the prospective user determine the suitability of **A-B-C** for each specific project and for the health and safety of personnel working in the area.

For additional information and/or precautions check Material Safety Data Sheet (MSDS) or Product Data Sheet (PDS) available online at www.fiberlock.com

*Maximum regulatory allowable VOC content for this category of product.

Fiberlock Technologies, Inc.
Andover, MA 01810
(800) 342-3755
www.fiberlock.com

6423