

FIBERLOCK TECHNOLOGIES

IAQ

Mold Remediation Products

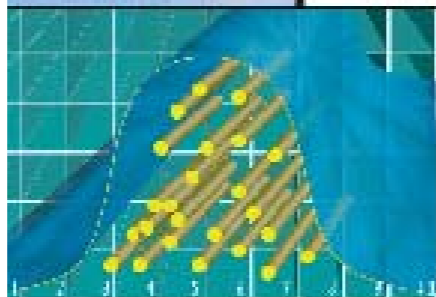
6000

MOLD RESISTANT COATING

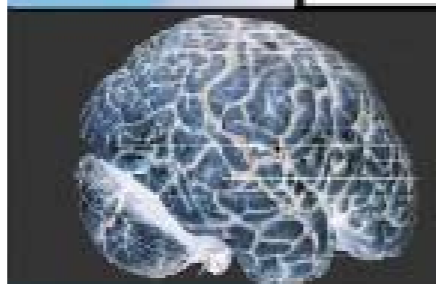


Fiberlock Technologies

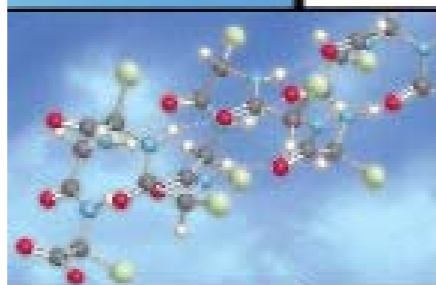
QUALITY



KNOWLEDGE



SCIENCE



PRECAUTIONS: Stir thoroughly. Do not mix with any other coatings, solvents or colors in oil. **Fiberlock IAQ 6000** is resistant to the deteriorating action of mold and mildew. No claim is made for the preservative action other than to the coating film. Do not apply when air or surface temperature is below 50°F, when drying conditions are poor or when surfaces are above a 15% moisture level content. Use adequate ventilation during application. For interior use only.

CLEAN UP: Clean tools and drippings with warm soapy water before **Fiberlock IAQ 6000** dries. Dispose of all waste according to all existing local, state and federal regulations.

DRYING TIME @ 70°F 50% R.H. To Touch -1 Hour
Recoat - 2 Hours

COVERAGE - AVERAGE
Smooth Surfaces- 250-400 ft² per gallon
Porous Surfaces- 150-300 ft² per gallon
Spray- 50% of above

CAS. No.: 7732-18-5 13463-67-7 25265-77-4 57-55-6 Not Available *contents partially unknown	CHEMICAL INGREDIENTS: Water Titanium dioxide 2,2,4-Trimethyl-1, 3-Pentenediol Monoisobutyrate Propylene glycol Latex resin solids*
--	--

CAUTION!
KEEP OUT OF REACH OF CHILDREN.
Do not take internally. Close container after each use. Keep from freezing.
24 hour Emergency "CHEM-TEL" Phone: 1-800-255-3924

DISCLAIMER: These suggestions and data are based on information we believe to be reliable. They are offered in good faith, but without guarantee, as conditions and methods of use of this product are beyond our control. Neither Fiberlock Technologies, Inc., nor its agents shall be responsible for the use of this product or any procedures or apparatus mentioned. We recommend that the prospective user determine the suitability of **Fiberlock IAQ 6000** for each specific project and for the health and safety of personnel working in the area.

For additional information and/or precautions check Material Safety Data Sheet (MSDS) or Product Data Sheet (PDS) available online at www.fiberlock.com.

The 'USGBC Member Logo' is a trademark owned by the U.S. Green Building Council and is used by permission. The logo signifies only that Fiberlock Technologies is a USGBC member; USGBC does not review, certify, or endorse the products or services offered by its members.

**Maximum regulatory allowable VOC content for this category of product.

MADE IN THE USA
Manufactured by:
Fiberlock Technologies, Inc.
Andover, MA 01810
(800) 342-3755
www.fiberlock.com

FOR PROFESSIONAL USE ONLY
5 U.S. Gallons(18.925 Liters) Net
Max Allowable VOC Content**: 100
Actual Calculated VOC Content: 80

WHITE - 8360

www.fiberlock.com

Fiberlock IAQ 6000 is a white, tintable mold-resistant coating for professional use that contains an EPA-registered, broad-spectrum fungicide to prevent mold growth on the surface of the cured film. **Fiberlock IAQ 6000** is a durable, flexible, and permeable 100% acrylic water-based semi-gloss coating that can withstand the moist, humid conditions present in environments conducive to mold growth. **Fiberlock IAQ 6000** has been tested by independent and certified laboratories to prove resistance to mold growth on the surface of the coating, and has successfully passed both ASTM G-21 and ASTM D-3273 mold resistance testing with the highest scores possible. **Fiberlock IAQ 6000** is recommended for use on wood, plaster, wallboard, sheetrock, concrete, masonry block, primed metal and galvanized metal. **Fiberlock IAQ 6000** can also be used on new structural materials to help prevent mold growth during building construction.

SURFACE PREPARATION: Warning! If you scrape, sand, or remove old paint from any surface, you may release lead dust. LEAD IS TOXIC. EXPOSURE TO LEAD DUST CAN CAUSE SERIOUS ILLNESS, SUCH AS BRAIN DAMAGE, ESPECIALLY IN CHILDREN. PREGNANT WOMEN SHOULD ALSO AVOID EXPOSURE. Wear a NIOSH approved respirator to control lead exposure. Carefully clean up with a wet mop and HEPA vacuum. Before you start, find out how to protect yourself and your family by contacting the U.S. EPA/Lead Information Hotline at 1-800-424-LEAD(5323) or log on to www.epa.gov/lead.

Surfaces to be coated must be free of dust, mildew, mold, dirt, grease, loose paint, oil, glue size, calcimine, wax, soap and other surface contamination. Clean mold-contaminated surfaces with **IAQ 1000**, or use an EPA registered antimicrobial disinfectant cleaner such as **Fiberlock IAQ 2000**, **Fiberlock IAQ 2500**, **Shockwave™** or **ShockwaveRTU™**.

Patch irregularities with vinyl patching paste or an appropriate patching compound. **Fiberlock IAQ 6000** is self-priming over bare sheetrock, composition board, ceiling tile and concrete.

Wallboard, Sheetrock, Gypsum Board - Joint cement should be sanded smooth, but avoid abrading the paper.

Ferrous Metal - Clean, then prime with **Fiberlock IAQ 4000™** rust inhibiting direct-to-metal primer.

Wood - Seal knots and stains with **Fiberlock IAQ 5000™** stain-blocking primer.

Masonry Block - Apply one coat of **Fiberlock IAQ 3000™** block filler if a denser surface is desired.

APPLICATION TOOLS : Apply **Fiberlock IAQ 6000** with brush, roller or airless spray equipment.

TOOLS: **Brush:** Synthetic, nylon or polyester bristle
Roller: Synthetic Fiber 3/8" nap or longer
Spray: .017 to .021 tip

PRODUCT APPLICATION: **Fiberlock IAQ 6000** is supplied ready to use, but can be thinned sparingly with water (up to 1/2 pint water per gallon) for proper application consistency if necessary. Apply **Fiberlock IAQ 6000** generously and uniformly by brush, roller, or airless spray. Apply one coat of **Fiberlock IAQ 6000**, and ensure that the finished surface is properly sealed. To ensure that the finished surface is properly sealed, two-coats may be required on some porous surfaces.

TINTING: **Fiberlock IAQ 6000** may be tinted to any off-white or pastel based color. Add up to 2 oz. of universal colorant per gallon. Start with 50% of the tinting formula and adjust as necessary.