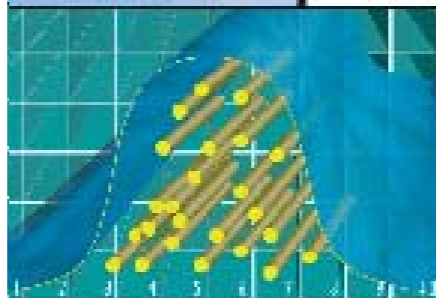
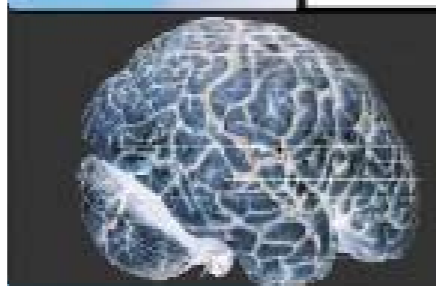


FIBERLOCK TECHNOLOGIES

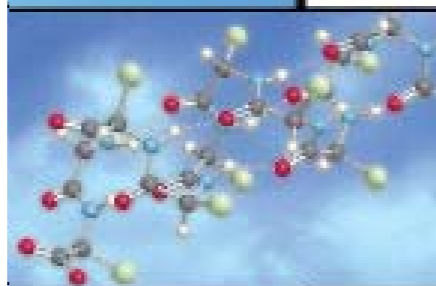
QUALITY



KNOWLEDGE



SCIENCE



IAQTM

Mold Remediation Products

6000 HD

**HEAVY DUTY
MOLD RESISTANT COATING**

WHITE - 8362

www.fiberlock.com

PRECAUTIONS: Stir thoroughly. Do not mix with any other coatings, solvents or colors in oil. **Fiberlock IAQ 6000HD** is resistant to the deteriorating action of mold and mildew. No claim is made for the preservative action other than to the coating film. Do not apply when air or surface temperature is below 50°F, when drying conditions are poor or when surfaces are above a 11% moisture level content. Use adequate ventilation during application. For interior use only.

CLEAN UP: Clean tools and drippings with warm soapy water before **Fiberlock IAQ 6000HD** dries. Dispose of all waste according to all existing local, state and federal regulations.

DRYING TIME @ 78°F 50% R.H.-
To Touch - 1 Hour
Recoat - 4 Hours

COVERAGE - AVERAGE
Smooth Surfaces- 250-400 ft² per gallon
Porous Surfaces- 100-250 ft² per gallon
Spray- 50% of above

CAS. No.:
7732-18-5
13463-67-7
Not Available
Not Available
Not Available

CHEMICAL INGREDIENTS:
Water
Titanium dioxide
Proprietary inert extender*
Proprietary surfactant*
Proprietary resin solids*

*contents partially unknown

CAUTION!
KEEP OUT OF REACH OF CHILDREN.
Do not take internally. Close container after each use. Keep from freezing.
24 hour Emergency "CHEM-TEL" Phone: 1-800-255-3924

DISCLAIMER: These suggestions and data are based on information we believe to be reliable. They are offered in good faith, but without guarantee, as conditions and methods of use of this product are beyond our control. Neither Fiberlock Technologies, Inc., nor its agents shall be responsible for the use of this product or any procedures or apparatus mentioned. We recommend that the prospective user determine the suitability of **Fiberlock IAQ 6000 HD** for each specific project and for the health and safety of personnel working in the area.

For additional information and/or precautions check Material Safety Data Sheet (MSDS) or Product Data Sheet (PDS) available online at www.fiberlock.com.

*Maximum regulatory allowable VOC content for this category of product.

MADE IN THE USA

Manufactured by:
Fiberlock Technologies, Inc.
Andover, MA 01810
(800) 342-3755
www.fiberlock.com

8362

FOR PROFESSIONAL USE ONLY
5 U.S. Gallons(18.925 Liters) Net
Max Allowable VOC Content*: 100
Actual Calculated VOC Content: 97

Fiberlock IAQ 6000HD is a white, tintable, high-build mold-resistant coating for both professional use in the remediation of mold and the prevention of mold growth during new building construction. This product contains an EPA-registered, broad-spectrum fungicide to prevent mold growth on the surface of the cured film. **Fiberlock IAQ 6000HD** is a durable and flexible 100% acrylic water-based flat coating that can withstand the moist, humid conditions present in environments conducive to mold growth. **Fiberlock IAQ 6000HD** is designed for use on non-porous and semi-porous building materials including gypsum wallboard, oriented-strand board (OSB), wood framing timbers, plywood, masonry block, and many other structural surfaces where a flexible, high-build mold resistant coating is necessary. **Fiberlock IAQ 6000HD** has been tested by independent and certified laboratories to prove resistance to mold growth on the surface of the coating, and has successfully passed both ASTM G-21 and ASTM D-3273 mold resistance testing with the highest scores possible. When used for mold remediation, **Fiberlock IAQ 6000HD** is recommended for use on wood, plaster, wallboard, sheetrock, concrete, masonry block, primed metal and galvanized metal.

SURFACE PREPARATION: Warning! If you scrape, sand, or remove old paint from any surface, you may release lead dust. LEAD IS TOXIC. EXPOSURE TO LEAD DUST CAN CAUSE SERIOUS ILLNESS, SUCH AS BRAIN DAMAGE, ESPECIALLY IN CHILDREN. PREGNANT WOMEN SHOULD ALSO AVOID EXPOSURE. Wear a NIOSH approved respirator to control lead exposure. Carefully clean up with a wet mop and HEPA vacuum. Before you start, find out how to protect yourself and your family by contacting the U.S. EPA/Lead Information Hotline at 1-800-424-LEAD(5323) or log on to www.epa.gov/lead.

Surfaces to be coated must be free of dust, mildew, mold, dirt, grease, loose paint, oil, glue size, calcimine, wax, soap and other surface contamination. Clean mold-contaminated surfaces with **IAQ 1000**, or use an EPA registered antimicrobial disinfectant cleaner such as **Fiberlock IAQ 2000**, **Fiberlock IAQ 2500**, **ShockwaveTM** or **ShockwaveRTUTM**.

Patch irregularities with vinyl patching paste or an appropriate patching compound. **Fiberlock IAQ 6000HD** is self-priming over bare sheetrock, composition board, ceiling tile and concrete.

Wallboard, Sheetrock, Gypsum Board - Joint cement should be sanded smooth, but avoid abrading the paper.

Ferrous Metal - Clean, then prime with **Fiberlock IAQ 4000TM** rust inhibiting direct-to-metal primer.

Wood - Seal knots and stains with **Fiberlock IAQ 5000TM** stain-blocking primer.

Masonry Block - Apply one coat of **Fiberlock IAQ 3000TM** block filler if a denser surface is desired.

APPLICATION TOOLS: Apply **Fiberlock IAQ 6000HD** with brush, roller or airless spray equipment.

TOOLS: **Brush:** Synthetic, nylon or polyester bristle
Roller: Synthetic Fiber 3/8" nap or longer
Spray: .021 to .025 tip (pressure settings from 1800 - 2000 P.S.I.)

PRODUCT APPLICATION: **Fiberlock IAQ 6000HD** is supplied ready to use, but can be thinned sparingly with water (up to 1/2 pint water per gallon) for proper application consistency if necessary. Apply **Fiberlock IAQ 6000HD** generously and uniformly by brush or airless spray. Ensure that the finished surface is properly sealed. To ensure that the finished surface is properly sealed, two-coats may be required on some highly porous surfaces.

TINTING: **Fiberlock IAQ 6000HD** may be tinted to any off-white or pastel based color. Add up to 2 oz. of universal colorant per gallon. Start with 50% of the tinting formula and adjust as necessary.